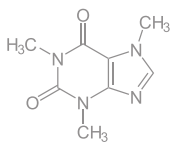
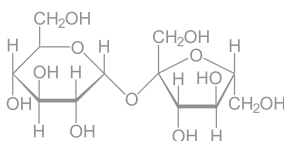




# Express Café



# &



# Bakery

We are proud to serve Harney & Sons teas



## JAPANESE SENCHA

Nourishing Japanese Sencha is handpicked in spring to draw out a soft, light character found only in the finest green tea. The delicate and clean flavor of this green tea make it quite approachable.

## ORGANIC GREEN WITH CITRUS & GINKGO

Organic Green is a beautiful blend of handpicked green tea from China with citrus and ginkgo. By blending in natural citrus and sweet ginkgo, the bitterness and astringency typical in green teas, disappears, drawing out a delightfully clean and soothing green tea with a refreshing mint finish.

## ENGLISH BREAKFAST

Our English Breakfast has an ancient pedigree. Researchers have traced its heritage back to the black tea the English drank regularly in the 1800's. It is, simply, China Black - 100% Keemun. A simple way to start your hectic day.

## DECAF CEYLON

Brimming with a wonderfully delicate flavor and subtly sweet aroma, this mixture of the finest black teas from Sri Lanka produces an impressively smooth and tranquil cup, all under the guise of decaf.

## IRISH BREAKFAST

100% Assam, like most traditional Irish blends, this is a good way to start your morning. Like cereal, it takes milk and sugar well. In contrast to other vendors, ours is a little more refined.

## DARJEELING

Our Darjeeling tea is a blend of First Flush and Autumnal teas from the best gardens. This mixture yields a light color in the cup - a fragrant "nose".

## ORANGE PEKOE (CEYLON & INDIA)

Also known as Orange Pekoe, this classic blend of strong Assam and smooth liquoring Ceylon, this tea produces a mellow, satisfying cup. The "Orange" in the name refers to the size of the tea leaf, Orange Pekoe leaves being the largest style leaves.

## EARL GREY

This blend was a gift from China to the British Prime Minister, Earl Grey. Our blend uses teas from India and China, blended with natural Oil of Bergamot.

## BLACK CURRANT

John's first flavored tea. It has "big" fruity, berry flavor. This full-bodied tea has become a traditional favorite in fine restaurants all over America.

## PASSION FRUIT

America's favorite tropical flavor. Give this "juicy" tea a try and you will know why it is so popular.

## DECAF EARL GREY

Our Decaffeinated Earl Grey starts with our Decaffeinated Ceylon. This is then scented with the natural Oil of Bergamot as with the traditional Earl Grey blend.

## HOT CINNAMON SPICE

As delicious as candy, this medium-bodied black tea is naturally sweetened to perfection by a blend of cinnamons, orange, and sweet cloves. The remarkably assertive tea effuses a hot spicy aroma and sets off miniature fireworks on the tongue. As you savor each sip, a gathering of spices settles at the bottom of your teacup for a final indulgence in pure cinnamon bliss!

## APRICOT

This is a very elegant tea with the "warm", almost nutty flavor of Apricot predominating.

## JASMINE

Made from Pouchong tea that is slightly browner than green tea. Fresh jasmine flowers are added to produce a delicate and fragrant brew.

## ORGANIC PEPPERMINT HERBAL

From Oregon comes a marvelous, brisk peppermint. The peppermint leaves from this area produce a great smelling and crisp tasting tisane.

## LEMON HERBAL

The predominant aroma of this delightful infusion is lemongrass. The addition of lemon rind and lemon flavor make this a light and soothing bedtime tea!

## RASPBERRY HERBAL

This tisane is a mixture of rosehips, hibiscus, raspberry leaves and raspberry flavor that produces a great tasting, great looking tea.

## EGYPTIAN CHAMOMILE

The tea's unique strong scent reminiscent of fresh green apples comes from the finest handpicked Egyptian Chamomile flower heads. The pale yellow chamomile brew is a delicious tea with a definite body and honey-sweet infusion.